

Acidentes ocorridos nas Rodovias Federais em 2005.

Rodovia BR 101 – SC

(Extensão 465 Km)

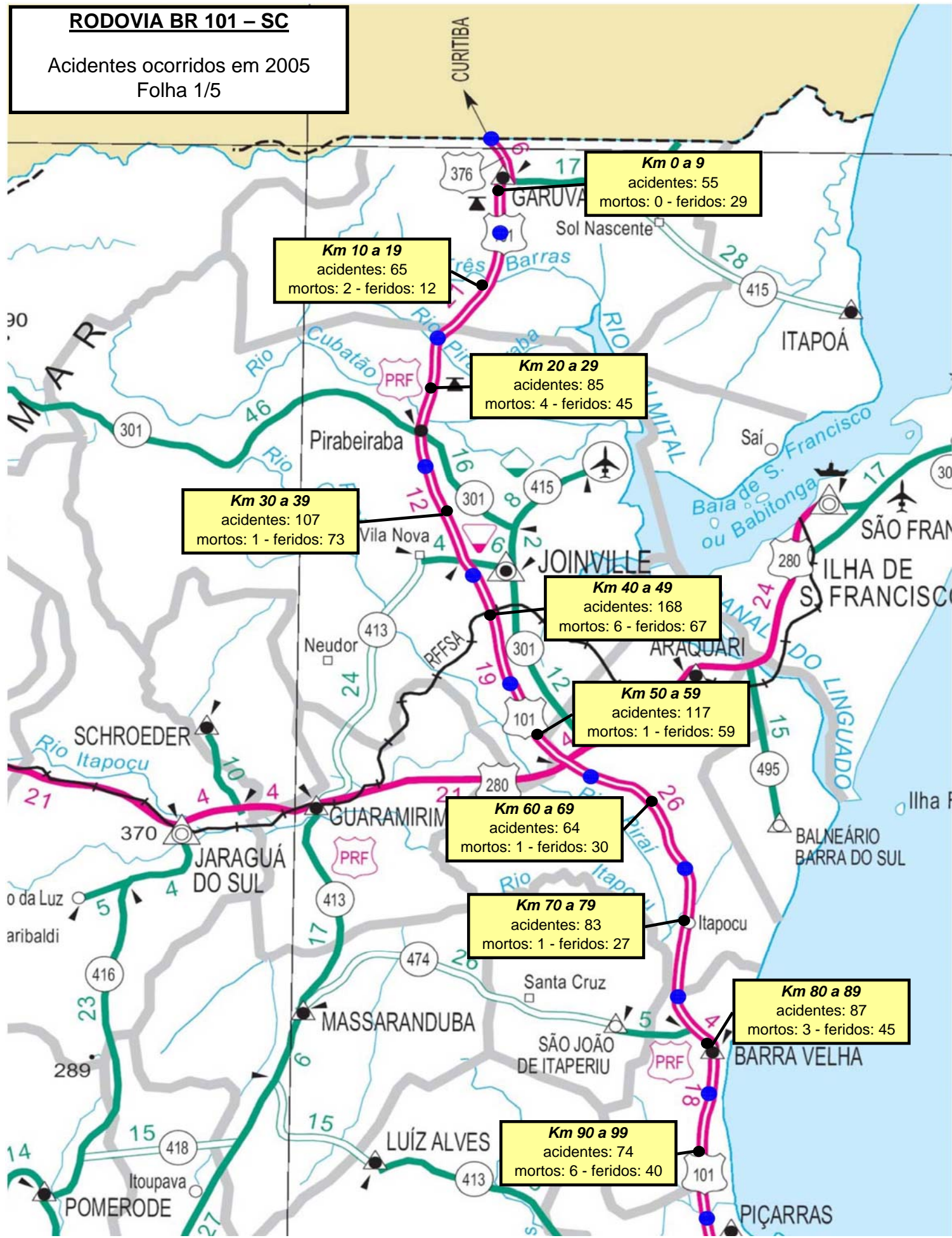
Resumo

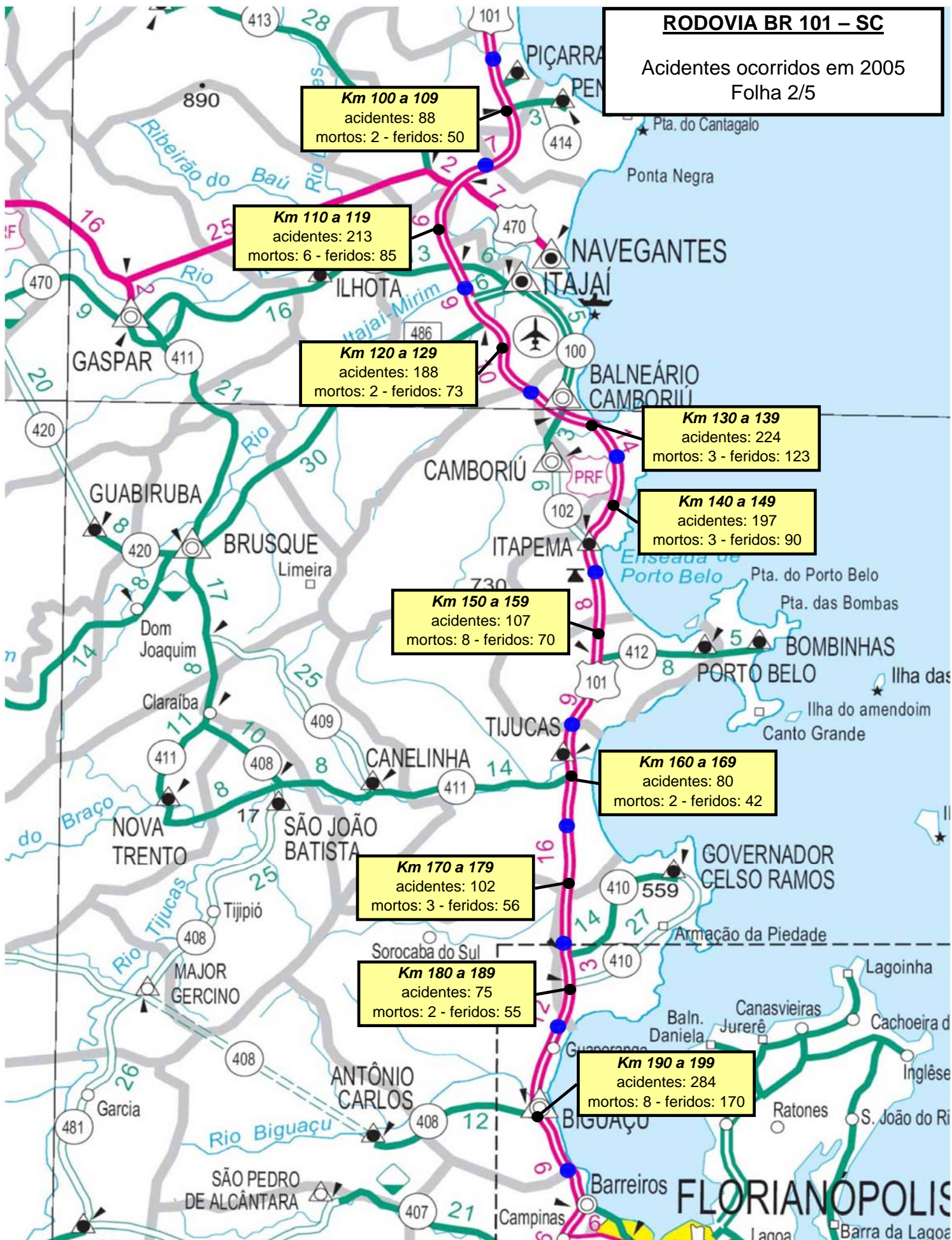
5.928 Acidentes

230 Vítimas Fatais

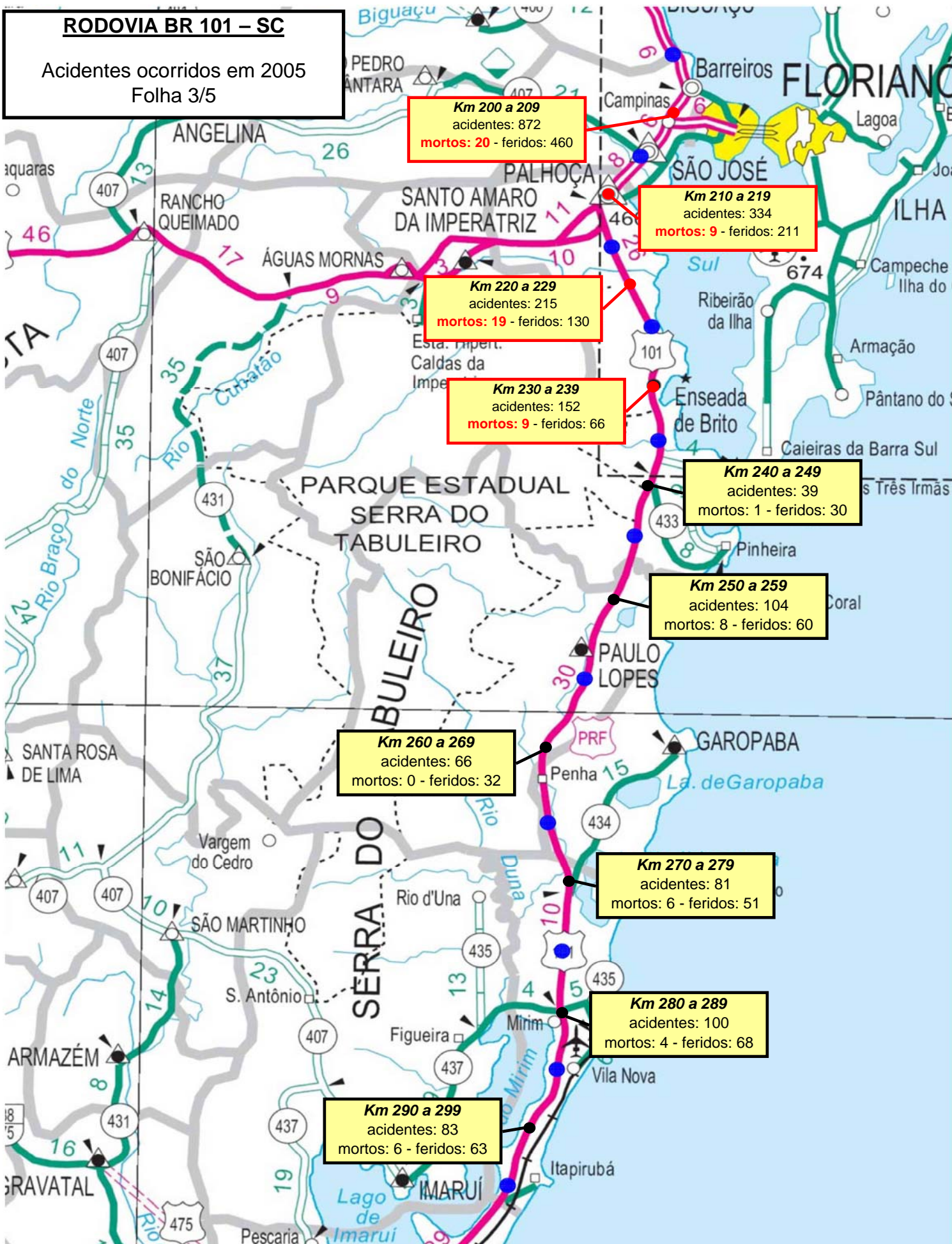
3.410 Feridos

RODOVIA BR 101 – SC
 Acidentes ocorridos em 2005
 Folha 1/5

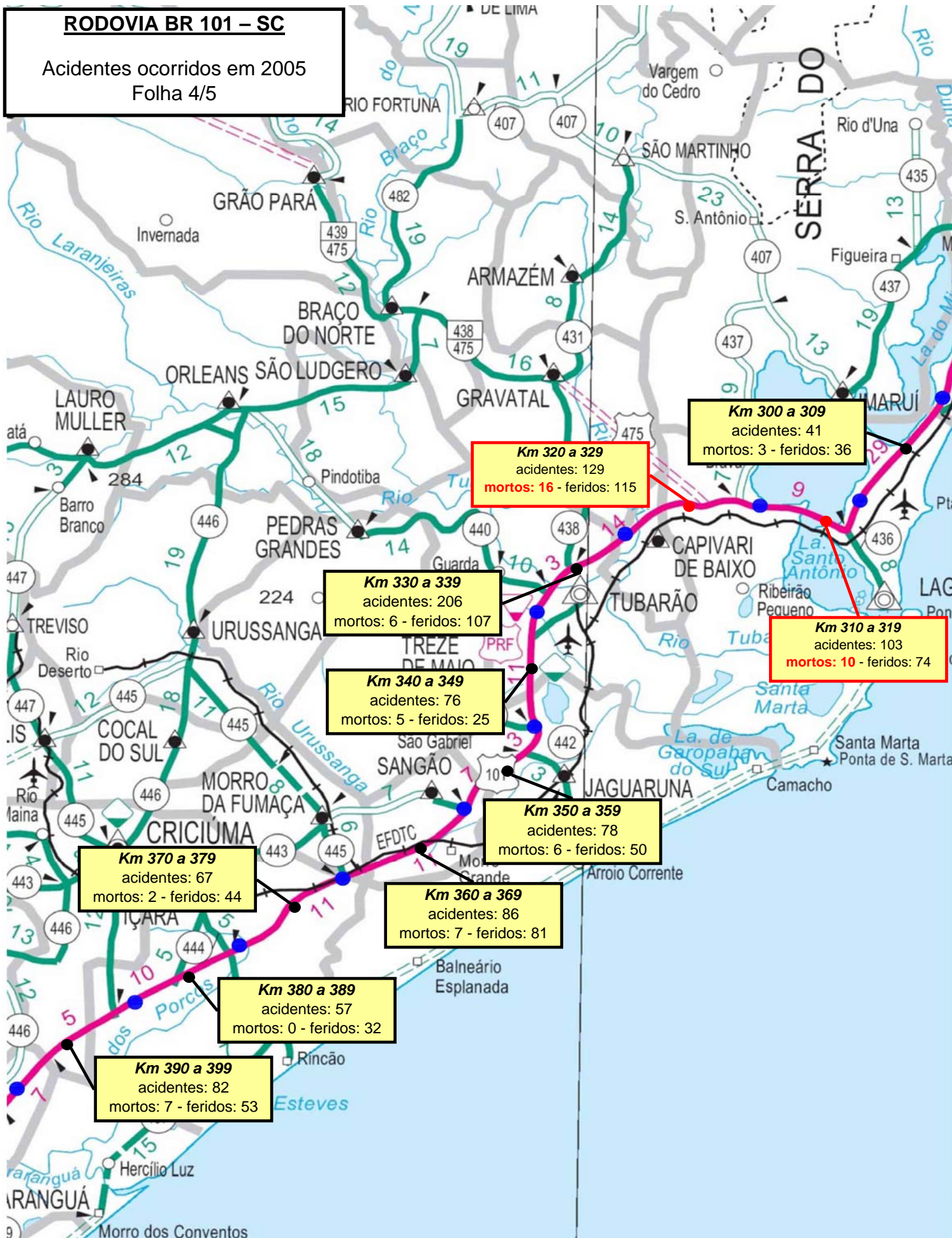




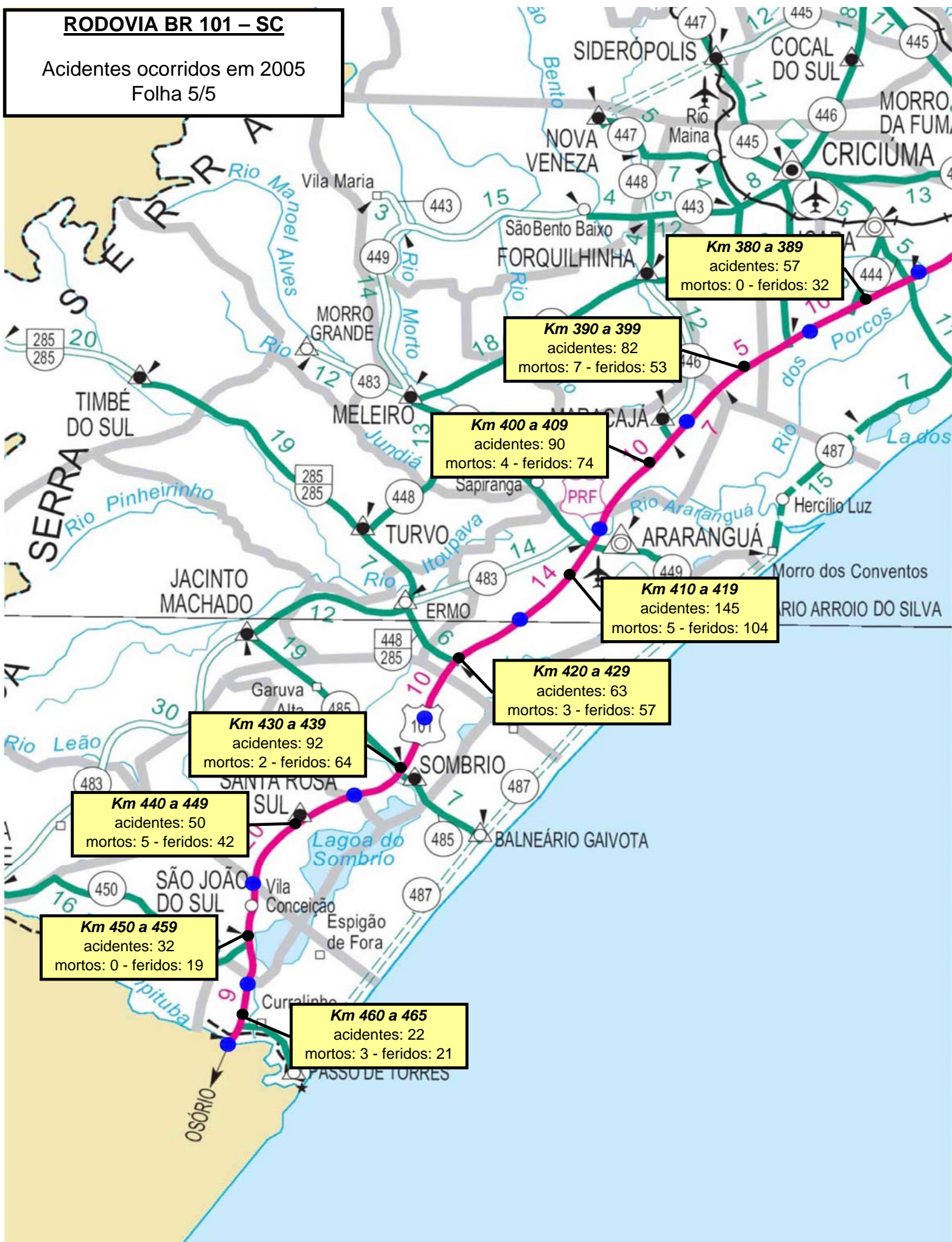
RODOVIA BR 101 – SC
Acidentes ocorridos em 2005
Folha 3/5



RODOVIA BR 101 – SC
 Acidentes ocorridos em 2005
 Folha 4/5

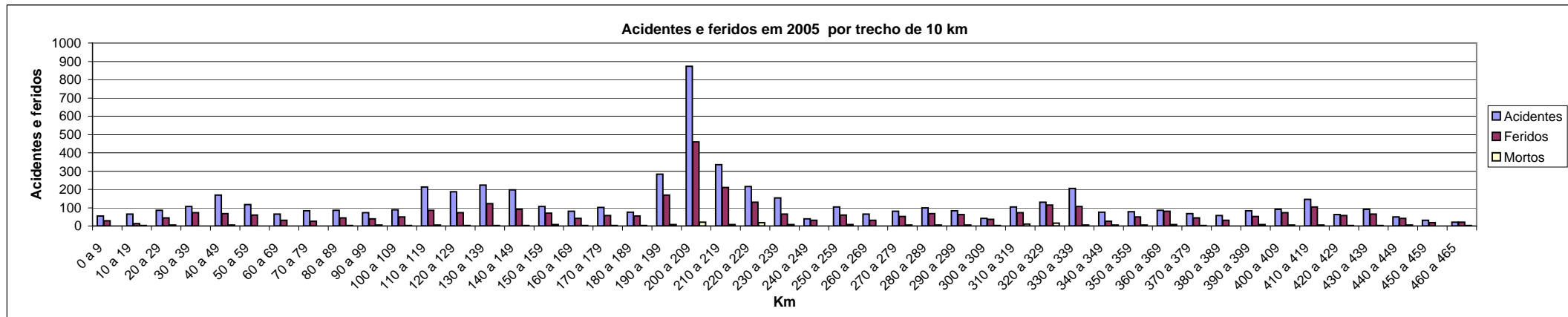


RODOVIA BR 101 – SC
 Acidentes ocorridos em 2005
 Folha 5/5



Acidentes ocorridos em 2005.

Km	0 a 9	10 a 19	20 a 29	30 a 39	40 a 49	50 a 59	60 a 69	70 a 79	80 a 89	90 a 99	100 a 109	110 a 119	120 a 129	130 a 139	140 a 149	150 a 159	160 a 169	170 a 179	180 a 189	190 a 199	200 a 209	210 a 219	220 a 229	230 a 239	240 a 249	250 a 259	260 a 269	270 a 279	280 a 289	290 a 299	300 a 309	310 a 319	320 a 329	330 a 339	340 a 349	350 a 359	360 a 369	370 a 379	380 a 389	390 a 399	400 a 409	410 a 419	420 a 429	430 a 439	440 a 449	450 a 459	460 a 465
Acidentes	55	65	85	107	168	117	64	83	87	74	88	213	188	224	197	107	80	102	75	284	872	334	215	152	39	104	66	81	100	83	41	103	129	206	76	78	86	67	57	82	90	145	63	92	50	32	22
Feridos	29	12	45	73	67	59	30	27	45	40	50	85	73	123	90	70	42	56	55	170	460	211	130	66	30	60	32	51	68	63	36	74	115	107	25	50	81	44	32	53	74	104	57	64	42	19	21
Mortos	0	2	4	1	6	1	1	1	3	6	2	6	2	3	3	8	2	3	2	8	20	9	19	9	1	8	0	6	4	6	3	10	16	6	5	6	7	2	0	7	4	5	3	2	5	0	3



Km	0 a 9	10 a 19	20 a 29	30 a 39	40 a 49	50 a 59	60 a 69	70 a 79	80 a 89	90 a 99	100 a 109	110 a 119	120 a 129	130 a 139	140 a 149	150 a 159	160 a 169	170 a 179	180 a 189	190 a 199	200 a 209	210 a 219	220 a 229	230 a 239	240 a 249	250 a 259	260 a 269	270 a 279	280 a 289	290 a 299	300 a 309	310 a 319	320 a 329	330 a 339	340 a 349	350 a 359	360 a 369	370 a 379	380 a 389	390 a 399	400 a 409	410 a 419	420 a 429	430 a 439	440 a 449	450 a 459	460 a 465
Mortos	0	2	4	1	6	1	1	1	3	6	2	6	2	3	3	8	2	3	2	8	20	9	19	9	1	8	0	6	4	6	3	10	16	6	5	6	7	2	0	7	4	5	3	2	5	0	3

